



2513UV-Pro G6

2513UV-Pro G6

Main Technical Specification

Item	Model	
	253UV G6	
Printhead	Ricoh Gen 6 (5PL) Grey Scale Micro Piezo Printhead	
Printhead No.	2-8H	
Print Size	2500mm*1300mm	
Print Thickness	1mm-100mm	
Ink Type	Environment-friendly UV Curing Ink	
Ink Color	Standard: C M Y K LC LM W, Varnish is optional.	
Ink Supply System	Automatic Negative Pressure Ink Supply System	
Ink Monitoring System	Voice Intelligent Alarm System	
Rip Software	Standard: PhotoPrint. Print Factory and Onyx are optional.	
Media Type	Acrylic, Aluminum Board, Ceramic Tile, Glass, Wood Board, PC, TPU, Leather, PVC Board, etc.	
Media Adsorption System	4 Vacuum Zones, Available for Different Types of Media	
Lifting Function	Carriage Height Automatic Adjustment, Intelligent Detection of Material Thickness	
Print File Format	TIFF, JPEG, PDF, EPS, PNG, AI, BMP, etc.	
Printer Dimension	4206mm*2200mm*1500mm (Length*Width*Height)	
Packing	4400mm*2300mm*1750mm (Length*Width*Height)	
Weight	1300kg / 1600kg	
Power/Power Rating	220V 50HZ/60HZ/8.0KW	
Computer Configuration	Computer System: Win10, 64 bit; Port USB 3.0	
Working Environmen	Independent, Clean, Low Dust, Less Sunshine, Well Ventilated Workshop, Temperature: 15°C-28°C, Humidity: 40%-70%	
Ventilation Device	Ventilation Fan is Necessary. Air Exhaust Volume: 600 CFM	
Print Speed (8H-All Color)	High Speed Mode	116m2/h
	Production Mode	81m2/h
	High Quality Mode	56m2/h

High Quality Industrial Level UV Flatbed Printer



Realistic picture effects and touch



Stable mechanical structure



Zhengzhou New Century Digital Printing Technology Co.,Ltd.

SC-2513UV-Pro High performance industrial level UV Flatbed printer, create unlimited business opportunity. G6

Richo G6

Max. Support for 4 Staggered Printing

Curing Technology

CMYK+W, CMYKLCm+W+V

1 | Function & Characteristics

Overall Frame Structure
The steel frame of the printer is dense and thick, which is not easy to twist and deform. The weight of the whole frame is increased by 40%, and the support point of the flatbed is increased by 50%.

THK High Precision Mute Linear Rail
Greatly reduce noise during carriage moving and improve linear rail smooth-going, use life and lubricating efficiency.

Printhead Protection Device
Equipped with Static Eliminating Device and Anti-Crash Device, Avoid Damage on Printhead and Printer.

One-Button Pneumatic Positioning
Unique media positioning lever with one-button pneumatic control for easier loading of flat materials. More accurate positioning and make repeatable printing without deviation.

Y-axis Screw & Guide Rail
Adopt WON silent guide rail imported from South Korea. During high-speed and stable operation, the Pass line is reduced, and the noise is small, ensuring that the printer can achieve high-precision output under high-speed printing.

Metal Grating Ruler and Magnetic Levitation Motor as standard
The X-axis is equipped with a magnetic levitation motor and metal grating to ensure high-precision and stable image output under high-speed printing.

2 | Simple Operation Application

Static Eliminator
It can eliminate well the static electricity generated on the surface of the material and achieve perfect printing effect.

Automatic Circulation System for White Ink
Realize the white ink main ink bucket intermittent mixing and real-time pipeline circulation dual functions, to ensure that the white ink always keep flowing state, avoid the failure of the white ink system.

Print Directly on the Media
It can be printed directly on paper media or on media with thickness, and can print up to 100mm thickness. (Please measure height before printing)

Voice Intelligent Alarm System

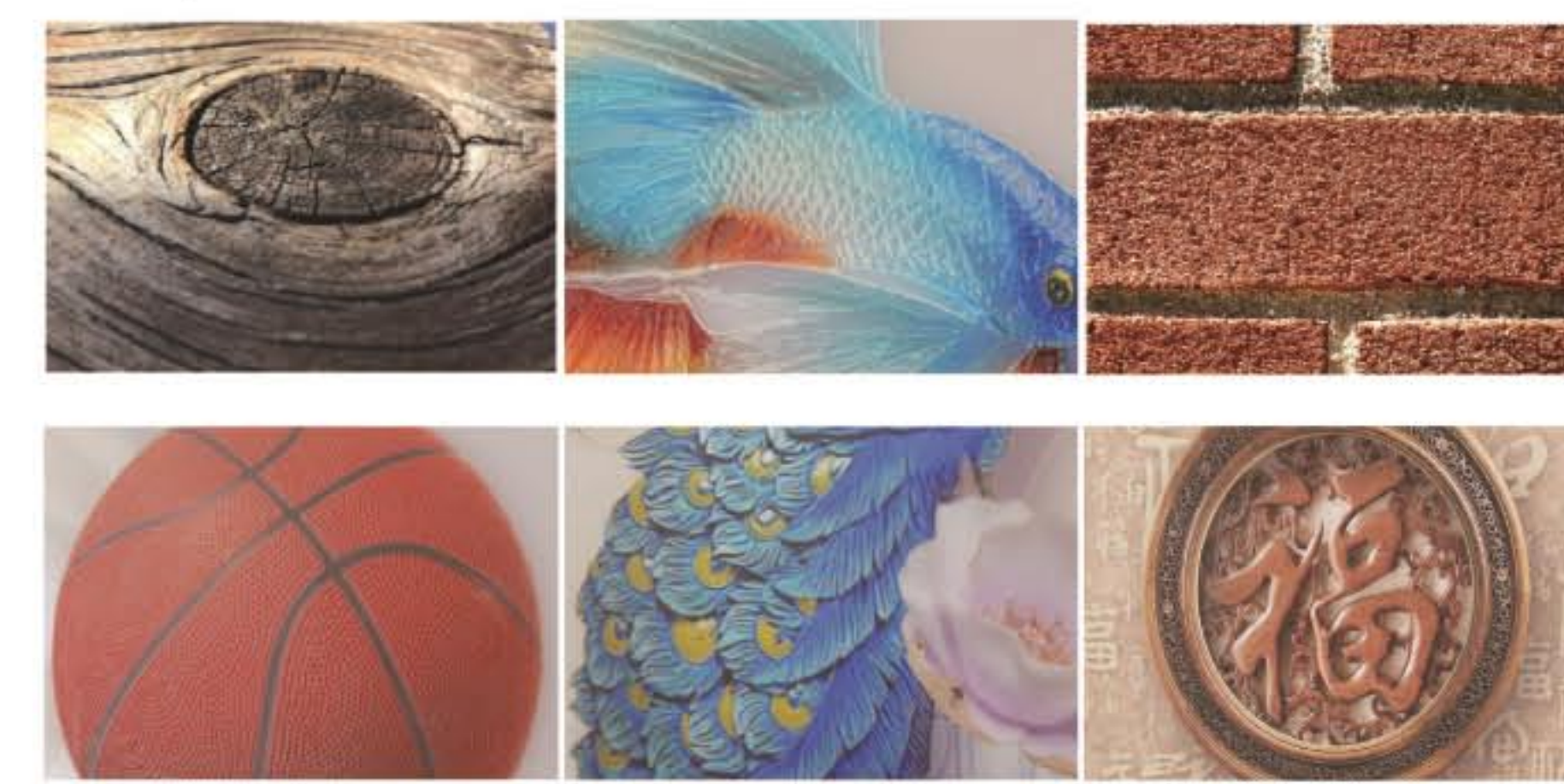
Data Statistics

Continue to print after Power Failure

3 | High Quality Printing Effect

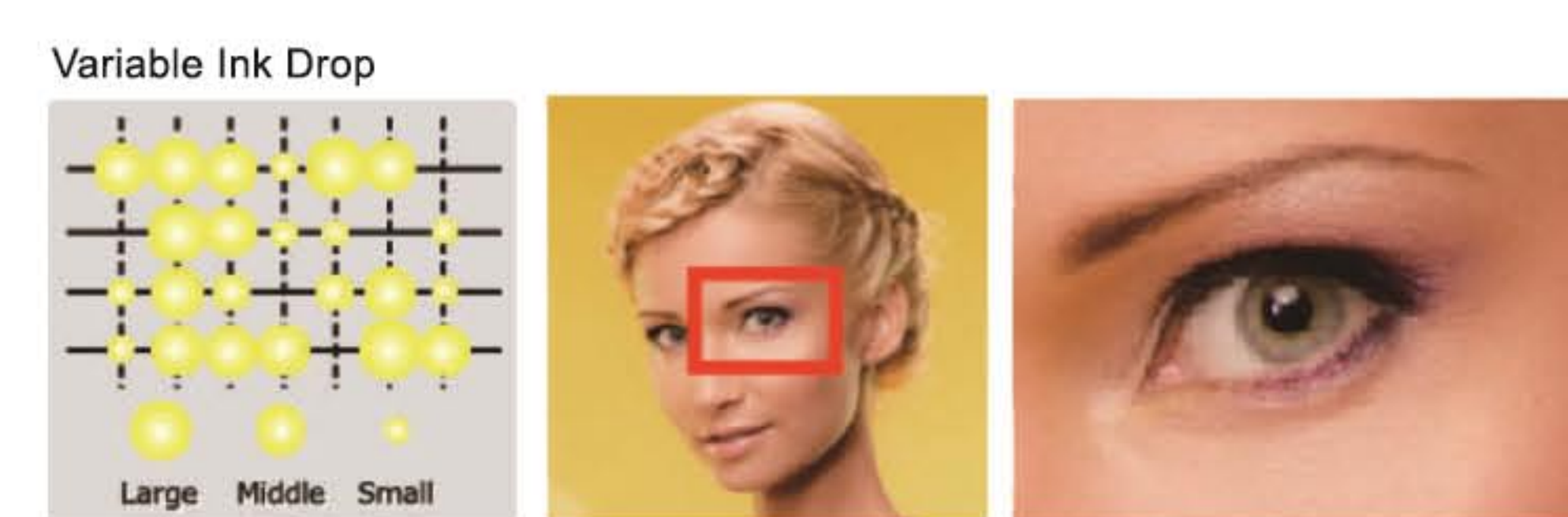
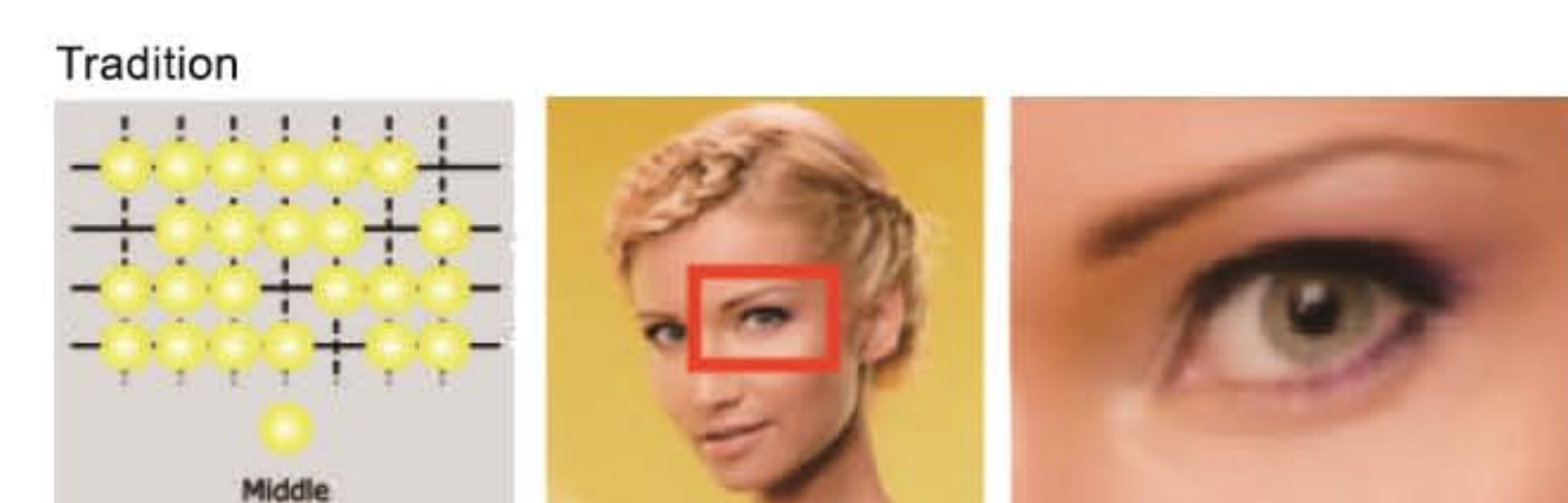
Easy to Print Spot Color, Make the Image rich sense of Hierarchy

Spot color refers to when printing instead of printing C, M, Y, K together, the color is printed specifically with a "specific ink" (white ink). After the printing of the image has an excellent sense of hierarchy, perfect restore the picture of the sense of reality.



Variable Ink Drop

The ink droplets are divided into 3 different sizes and can be clearly printed 2PT. Different Font sizes print, which can achieve high-quality fonts that reduce graininess printed. Achieve photo-level printing quality.



Smooth color printing with less granularity can be achieved through a combination of ink drops containing a minimum of 7 PL.

Synchronous output of color+white +color+varnish

Through its precise control system and perfect mechanical precision, the equipment makes the varnish present a shocking visual effect that achieves a 3D effect on printing. Not only is the price low, the process is simple, and also it can be polished on a full image or partially print.



Embossed Printing Effect

The embossed printing scheme, copy the master's handwriting, with strong embossed printing mode, does not miss a trace of brush lines, making your pictures look more delicate and realistic.



4 | Printer Details



UV-2513

High Quality Industrial Level UV Flatbed printer



Self-development



long life



High precision



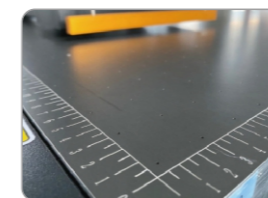
low cost

TECHNICAL PARAMETER

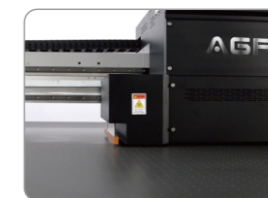
Model	UV-2513
Printhead	Ricoh Gen 5/Gen 6(7PL)Grey Scale Micro Piezo Printhead
Printhead No.	2-8H
Print Size	2500mm*1300mm
Print Thickness	1mm-100mm
Ink Type	Environment-friendly UV Curing Ink
Ink Color	Standard: C M Y K Lc Lm W, Varnish is optional
Print Speed (8H-All Color)	High Speed Mode 56.7m ² /h
	Production Mode 34.2m ² /h
	High Quality Mode 29.2m ² /h
RIP Software	Standard: PhotoPrint. Print Factory and Onyx are optional.
Ink Supply System	Automatic Negative Pressure Ink Supply System
Ink Monitoring System	Voice Intelligent Alarm System
Media Type	Acrylic, Aluminum Board, Ceramic Tile, Glass, Wood Board, PC, TPU,Leather, PVC Board, etc.
Media Adsorption System	4 Vacuum Zones, Available for Different Types of Media
Lifting Function	Carriage Height Automatic Adjustment, Intelligent Detection of Material Thickness
Ventilation Device	Ventilation Fan is Necessary. Air Exhaust Volume:600 CFM
Print File Format	TIFF, JPEG, PDF, EPS, PNG, AI, BMP, etc.
Power/Power Rating	220V 50HZ/60HZ/8.0KW
Computer Configuration	Computer System: Win10, 64 bit, Port USB 2.0
Working Environment	Independent, Clean, Low Dust, Less Sunshine, Well Ventilated Workshop
	Temperature:15°C-28°C, Humidity:40%-70%
Machine Size/Weight	4206*2200*1500mm(L*W*H) 1300kg
Packaging Size/Weight	4400*2300*1750mm(L*W*H) 1600kg



KCMY+LcLm+W+V



Platform Suction System



Static Eliminating Device



High precision guide rail